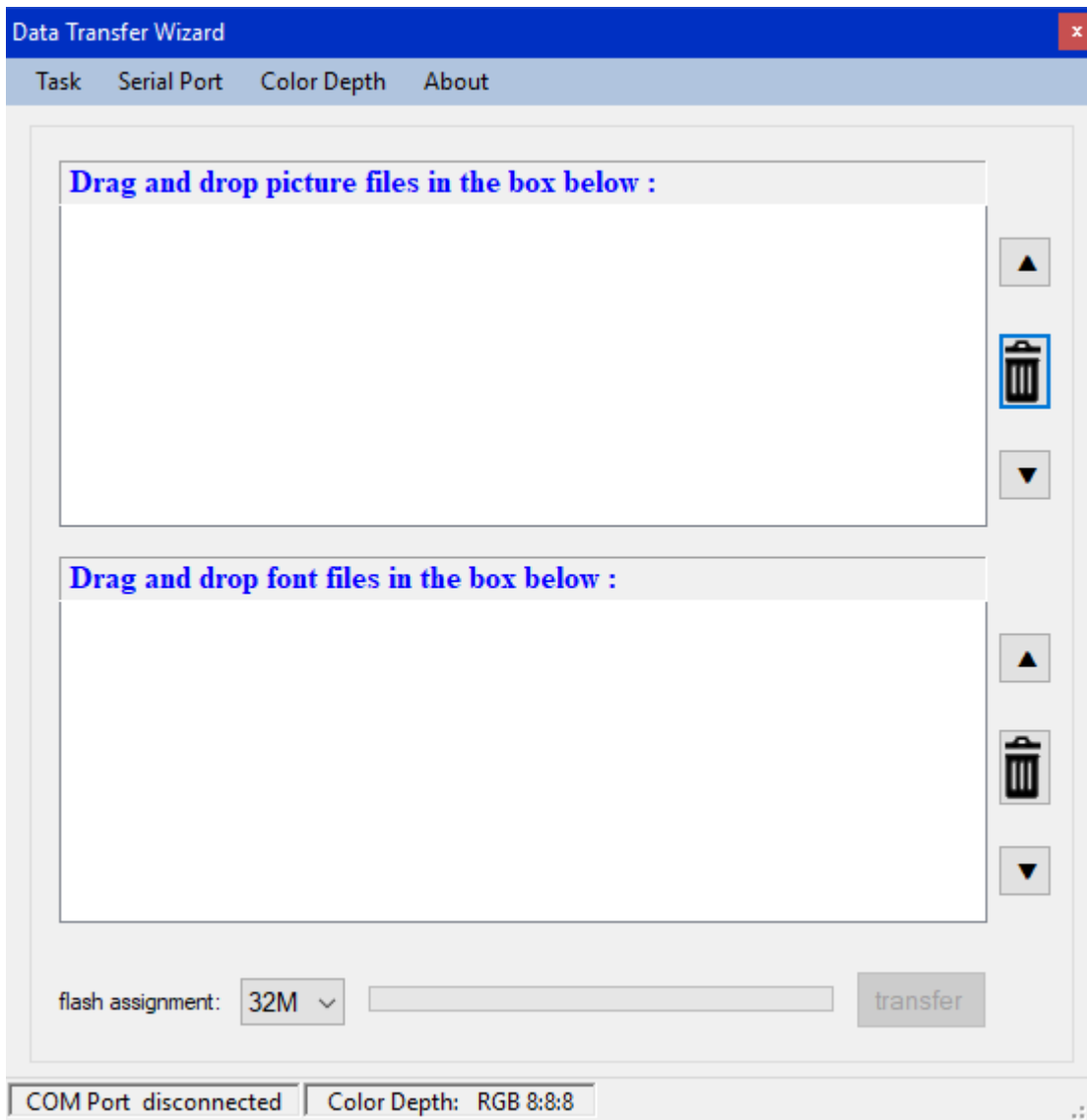


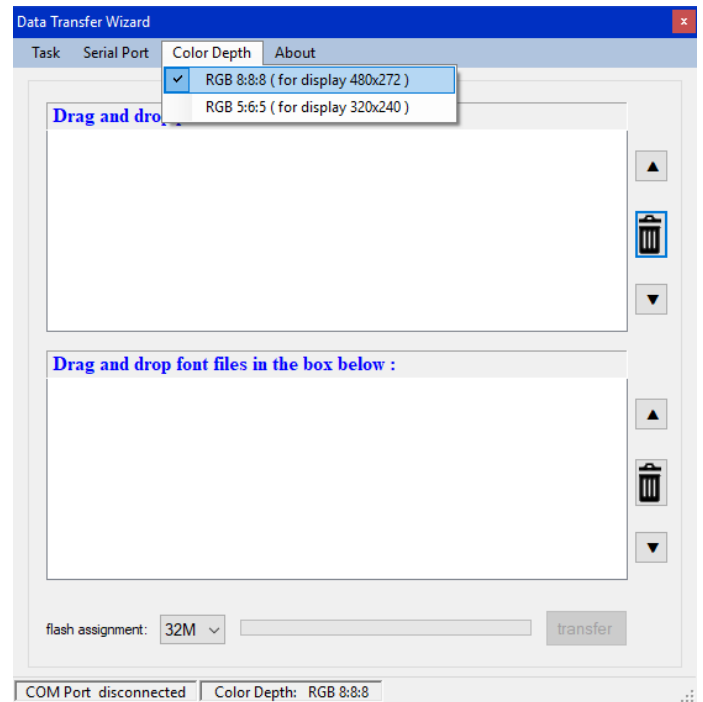
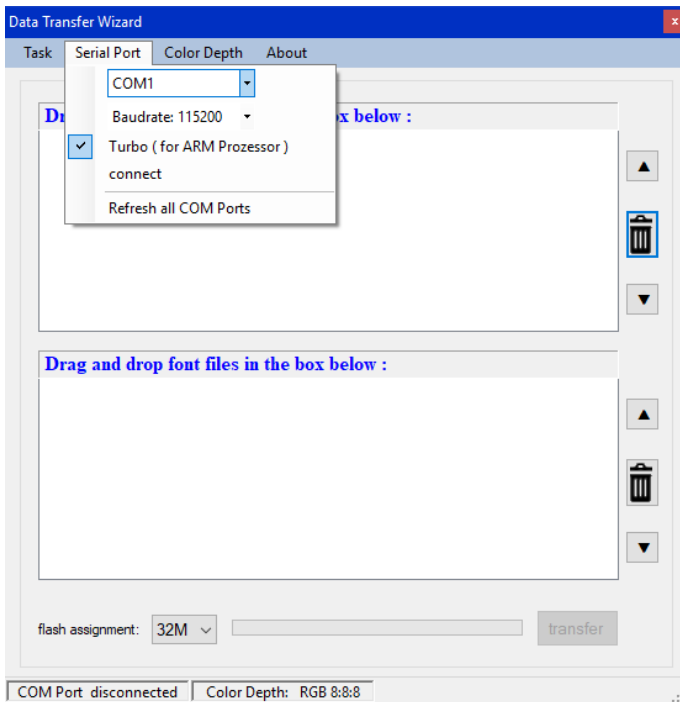
Data Transfer Wizard

08/2024

The "Data Transfer Wizard" program is used to copy image files and fonts to a transmitter display (all non-Graf-Syteco colour displays).
The TFT display STM32 adapter (2.250.7583) is used as hardware.



Setup & use



Select the correct COM port via "Serial Port" and connect to the μ C via the "connect" button. The text "connected" with a green background should then appear in the bottom left-hand corner. Now select the appropriate display type via "Colour Depth":

- RGB 8:8:8 for Nano-magna, Nano-media, Hypro+
- RGB 5:6:5 for PocketEvo-*

Next, drag the corresponding data into the respective fields and transfer it to the transmitter using the "transfer" button.