

QuickParam

08/2024

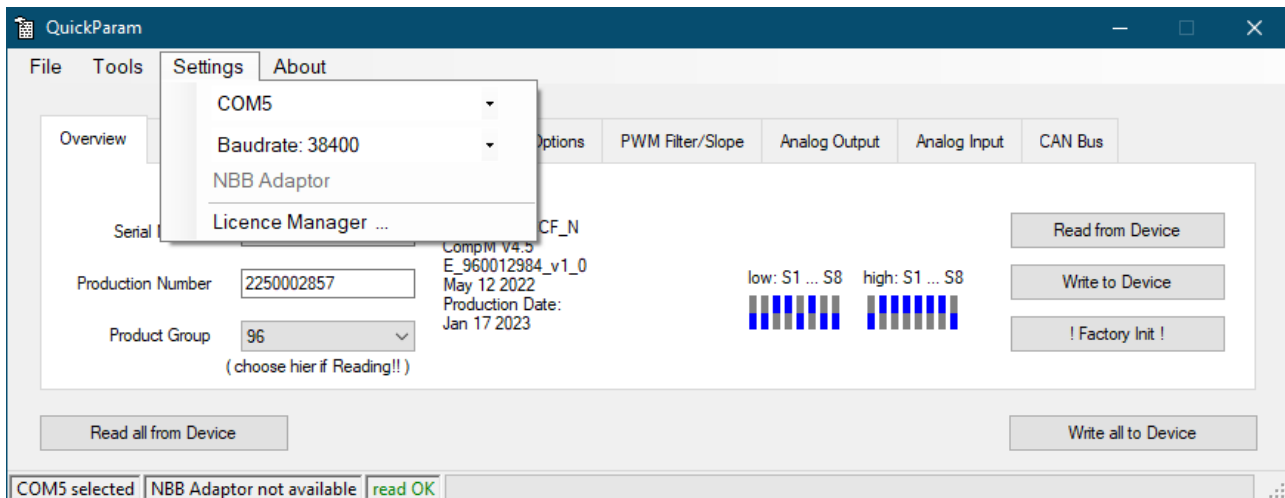
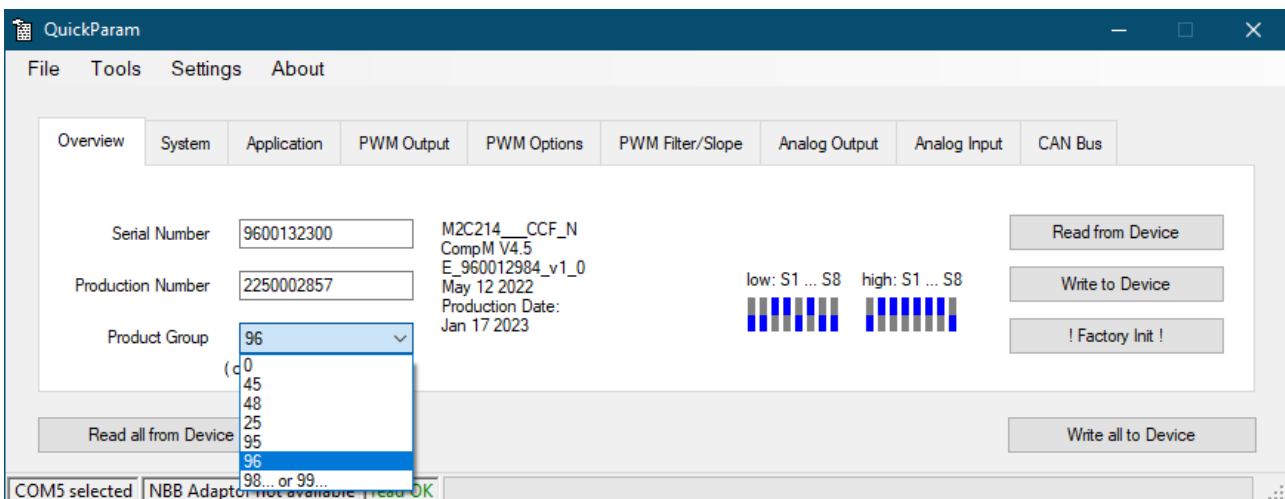
The comprehensive QuickParam tool is used to parameterise receivers. The following parameters can be edited:

- Serial number
- Production number
- Emergency stop parameter
- HF parameters
- Application parameters (customer-specific fields)
- PWM parameters
- Analogue out parameter
- Analogue in parameter
- CAN bus parameters

In addition, the name and version of the programmed firmware and the production date can be read out.

The Compact M universal programming adapter (2.250.7506) is used as the connection between the receiver and the PC.

Reading and writing parameters



1. select the appropriate product group for the receiver under "Product Group".
 2. select the COM port with the connected Universal Programming Adapter Compact M (2.250.7506) via "Settings"
 3. ensure that the toggle switches of the programming adapter "BSL" are set to **OFF** and "SEL" to **OFF**
 4. connect the receiver to a suitable power supply (**make sure the operating voltage is correct!**)
- Only the values of the currently selected tab (Overview) are read out with the "Read from Device" button; all parameters are read out with "Read all from Device"
 - Similarly, only the values of the current tab can be written with the "Write to Device" button; the complete data set is written with "Write all to Device"
 - The button "! Factory Init !" button resets all parameters to the default values stored in the firmware → **Save RF calibration values beforehand**
 - Parameter sets can be saved or loaded via File → Import or File → Export → **Save RF calibration values beforehand**

! Several programmes cannot access the same COM port at the same time. Only one programme should be open at a time!

! When changing the parameters, ensure that the calibration values are not overwritten!